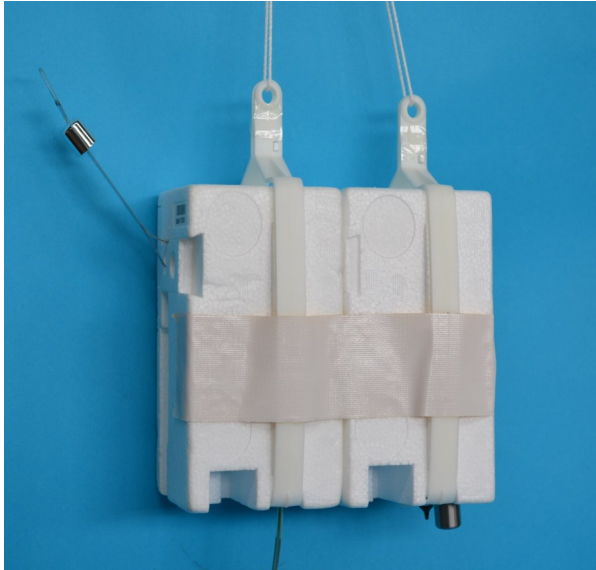


Radioactivity sonde

MNS-13



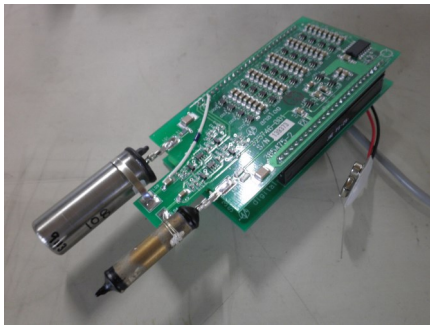
Outline

Radioactivity Sonde consists of radioactivity sensor and GPS radiosonde, which enables to measure the vertical profile of both β and γ radiations together with temperature, humidity, height, wind speed and wind direction. The intensity of β and γ radiations are detected during radiosonde's ascent and transmitted to the ground receiver system as a pulse count value per one second.

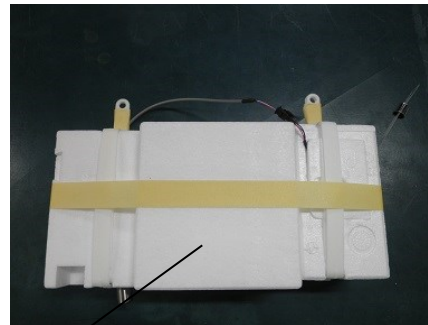
Two types of Geiger Muller tube (GM tube) are installed. One detects γ ray and the other is for β and γ rays. Measured pulse count values can be converted to other units (e.g., mR/h) assuming source of radiation is Cs-137.

Ground receiver RD-08AC and sounding software MGPS-R supports Radioactivity sonde operation.

Additionally, γ radiation spectrum can be measured by connecting Spectrum meter (option) with 512 channels per one minute.

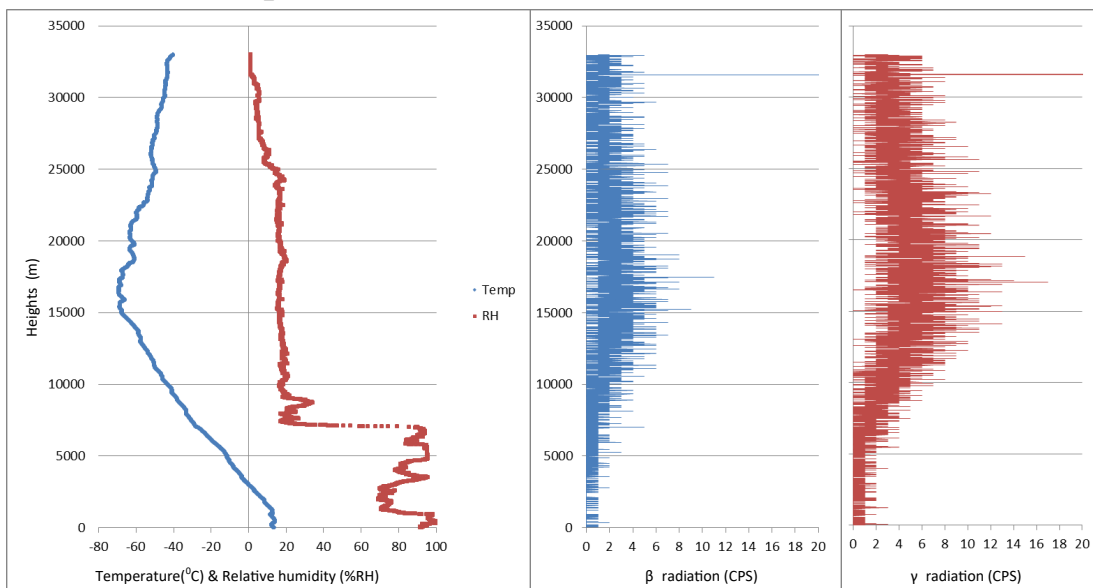


GM tube sensor



← Spectrum meter (optional)

Observation example

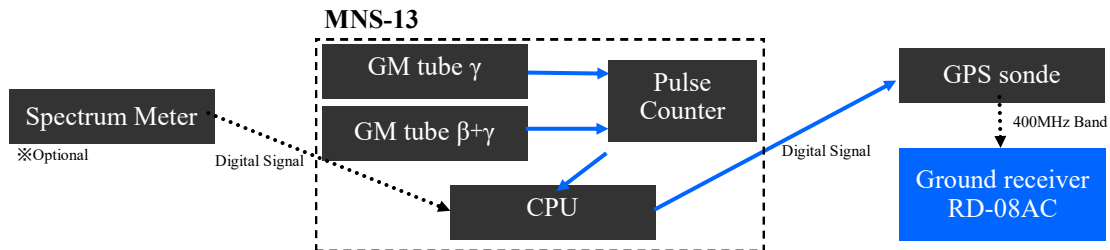


Specifications

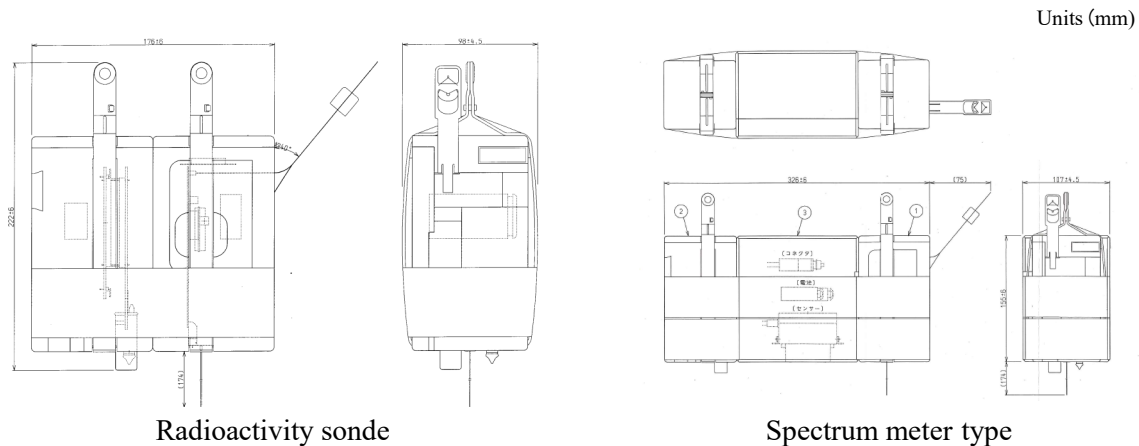
Radioactivity Intensity	$\beta + \gamma$ radiation	CENTRONIC ZP1328 Geiger Muller tube	Usage Environment	Temperature	-70°C to +40°C
	γ radiation	CENTRONIC ZP1208 Geiger Muller tube		Humidity	0%RH to 100%RH
	Measurement Range	Count value B+ γ radiation: 0 to 1024 CPS γ radiation: 0 to 1024 CPS	Power	Pressure	1050 hPa to 5 hPa
	Intensity*1	β + γ radiation: 0.1 to 200 mR/h γ radiation: 0.4 to 90 mR/h		Voltage	9 VDC
	Accuracy	≤10%		Current	50 mA approx. At normal temperature
	Sampling	1 second	Operation time	Type	Lithium battery (LA522) x 1
	Storage life	3 years		> 2 hours	
			Dimensions	98(W) x 155(H) x 176(D) mm (including RS-06G) Excluding antenna and sensor boom.	
		Weight	280 g (including RS-06G)		

*1): Calibrated with Cs-137

Block Diagram



Overview



⚠ Cautions

- For safe and correct usage, please read the "Operation Manual" prior to the use of the products.
- The specifications and appearances might be changed without prior notice, which please understand.
- The specifications shown in the catalog are of our standard products. We are pleased to customize it to meet customer's requirements. For the details, please contact us.
- Please understand in advance that our company cannot assume the responsibility of any claims made by the third party about any monetary damages or any loss of profits arising out from the use of our products.
- The color of the product photography on catalog might be different from that of actual product because of printing.

meisei electric co.,ltd.

1-1, Toyosu 3-chome, Koto-ku, Tokyo 135-8115, Japan
 Tel: +81-3-6204-8254 Fax: +81-3-6204-8888
<http://www.meisei.jp/sonde/>
 Global Marketing Gr.

The specifications in this catalog are current as of September 2018.

No. MSPA4-035 M1811

IHI GROUP
 Realize your dreams